

CLOSED SPELTER SOCKET



Material	:	Cast steel
Working Load Limit	:	20% of the MBL
Finish	:	Painted or galvanised (< Type No. 201 standard galvanised)
Temperature Range	:	-40 °C up to +200 °C
Standard Certification	:	Certificate of Conformity 3.1 material certificate EN 10204

TYPE APPROVED PRODUCT



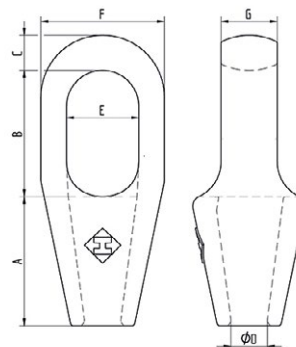
SOCKETS

Sockets are Type Approved by DNVGL according DNVGL ST-0378



These sockets include our non-rotating system (NRS-system) which prevents the tamp from turning or slipping out of the cone and guarantees a high performance connection.

Non-standard sizes or custom products available on request.



NR.	Rope Ø	Article number		MBL tons	A	B	C	ØD	E	F	G	Weight kg ±
	mm	Painted RAL 5013 blue	galvanised									
290	6 - 7	-	CSS290G	8	52	46	11	8	20	36,5	13	0,3
292	8 - 10	-	CSS292G	12	58	52,5	14	11	24	43	16	0,4
294	11 - 13	-	CSS294G	20	63,5	59	17,5	14	28,5	51	22	0,8
296	14 - 16	-	CSS296G	30	76,5	65	20,5	17,5	35	66,5	25,4	1,4
298	18 - 19	-	CSS298G	40	90	75	26	21	42	75	31	2,1
201	20 - 22	CSS201P	CSS201G	60	101	90	33	24	47	92	38	4
204	23 - 26	CSS204P	CSS204G	75	114	103	36	28	57	106	45	6
207	27 - 30	CSS207P	CSS207G	100	127	116	39	32	63	114	51	7,5
212	31 - 36	CSS212P	CSS212G	125	139	130	44	38	70	128	58	11
215	37 - 39	CSS215P	CSS215G	150	152	155	51	41	79	137	64	14
217	40 - 42	CSS217P	CSS217G	180	165	171	54	44	82	146	70	17,5
219	43 - 48	CSS219P	CSS219G	230	190	198	56	51	89	171	77	27,5
222	49 - 54	CSS222P	CSS222G	280	216	224	62	57	98	194	84	40
224	55 - 60	CSS224P	CSS224G	375	228	247	73	65	110	216	94	52
226	61 - 68	CSS226P	CSS226G	425	248	270	80	73	140	241	102	63
227	69 - 75	CSS227P	CSS227G	500	279	286	79	79	159	273	124	88,5
228	76 - 80	CSS228P	CSS228G	600	305	298	83	86	171	292	133	111
229	81 - 86	CSS229P	CSS229G	700	330	311	102	92	184	311	146	143
230	87 - 93	CSS230P	CSS230G	750	356	330	102	99	197	330	159	166
231	94 - 102	CSS231P	CSS231G	950	381	356	108	108	216	362	178	217
233	108 - 115	CSS233P	CSS233G	1200	460	425	120	125	235	405	190	338
240	122 - 130	CSS240P	CSS240G	1400	500	475	140	138	270	515	210	579
250	140 - 155	CSS250P	CSS250G	2000	580	550	150	160	300	510	250	654
260	158 - 167	CSS260P	CSS260G	2500	675	600	175	175	325	600	300	1063